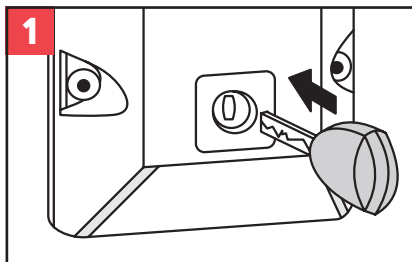


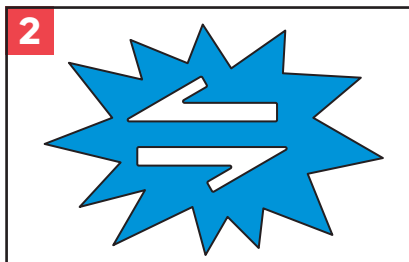
How to use and validate your CLIQ Key

Don't turn key in WallPD keyway!

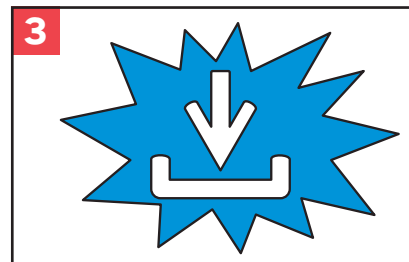


Insert key into the bottom of the keyway, leave key there.

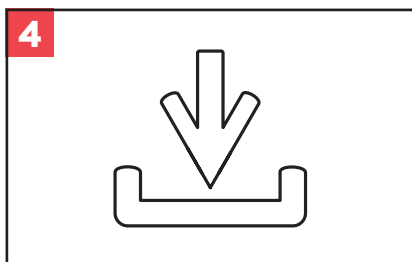
Do not turn the key.



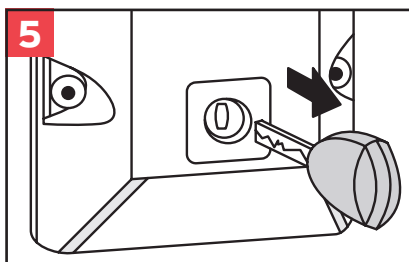
Key searches the contact to remote task server.



Key is written and the symbol blinks during the writing. Writing may take up to 1-2 minutes, depending on the amount of the update.



Successful writing ends with a beep that repeats every three seconds until the key is removed from PD.



Remove the key from keyway.

Do not turn the key.

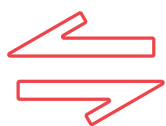
Indications



When CLIQ logo light is solid, WallPD is ready to be used. If the symbol is blinking, WallPD is not ready. In this case, please contact the system administrator. If the offline update setting is enabled, the key validity update may still be possible.



Level of battery - if indication is lit, the battery level of key is low and key functionality will end after few operations. Any problems or issues contact Council on 3810 6666.



Connection to remote server - when indication is blinking WallPD is contacting the remote server. When indication is solid the connection has been established.



Key writing - when indication is blinking, key is written. Do not remove key at this stage.



Message - if system administrator is using email postings for informing the key holders there might be an indication of an email send. Email contains the keys valid time, schedule and authorisations.



Errors - red lit and three audible beeps. An error has occurred. Remove the key from key way and re-insert it after a couple of seconds. Any problems or issues contact Council on 3810 6666.