

# Environment and Sustainability

**2025**  
PROGRAM

EVENTS | ACTIVITIES | OPPORTUNITIES



## MAYOR'S MESSAGE



Ipswich is fortunate when it comes to our natural environment. Our 11,000kms of waterways support iconic species from lungfish to platypus. The health of our waterways impacts not only us, but has a flow-on effect all the way to Moreton Bay.

Our city has about 8,500 hectares of open space, from urban bushland through to vast Enviroplan conservation estates. This is important for preserving threatened species from koalas to brush-tailed rock-wallabies, and connecting regional wildlife corridors.

We can all be a part of creating positive change. There are so many beautiful natural areas for you to enjoy – make 2025 the year you explore as many as you can.

**Mayor Teresa Harding**  
City of Ipswich

## CHAIR'S MESSAGE



Whether you are at home or in the community, there are easy things you can do for a cleaner, greener future in Ipswich.

It can be as simple as getting your free plants for your backyard from council's nursery, or making sure you separate your household waste properly for your yellow-lid recycling bin and lime-green lid Garden Organics (GO) bin.

You can be part of the 'bigger picture' by joining community efforts to create a healthier environment, such as joining one of council's free planting events, or becoming a regular environmental volunteer. There is something for everyone!

**Councillor Jim Madden**  
Environment and Sustainability  
Committee Chairperson

# PROGRAM SNAPSHOT

## Key events in 2025

Urban Greening .....	4
Restoring waterways .....	5
Experience Nature .....	6
Sustainable Ipswich .....	7

## What you can do in the community

Conservation estates.....	8
Enviro volunteers .....	10
Queens Park.....	11
Bushcare.....	12
Funding and grants.....	13
EnviroEd.....	14

## What you can do at home

Kerbside collection .....	15
Landholder Partnerships .....	16
Free Plant Program .....	17
Get Ready Queensland .....	18
Ipswich Disaster Dashboard .....	19



**Subscribe to  
Enviro updates**

The monthly Environment Matters e-newsletter sends the latest news about Ipswich's natural environment and sustainability initiatives straight to your inbox.

Subscribe for updates at  
[ipswich.qld.gov.au/subscribe](https://ipswich.qld.gov.au/subscribe)

Ipswich City Council respectfully acknowledges the Traditional Owners as custodians of the land and waters we share. We pay our respects to their Elders past, present and emerging, as the keepers of the traditions, customs, cultures and stories of proud peoples.

# URBAN GREENING



Trees in urban areas bring multiple benefits for people and the environment.

Cooling neighbourhoods, absorbing and filtering pollutants, providing habitat, increasing enjoyment of local areas and more!

Ipswich's urban footprint had only 27.2 per cent canopy cover in 2019. Our rapid population growth will impact that further, but council has a goal to increase canopy cover in priority suburbs by 10 per cent by 2042.

You can read more about actions for our city in the Urban Greening Plan at [ipswich.qld.gov.au](https://ipswich.qld.gov.au)



---

## GREENING YOUR SUBURB

Council will hold free community planting days in priority suburbs in 2025.

You can help bring the benefits of urban greening to local neighbourhoods.

These events are part of delivering goals in the Urban Greening Plan.



---

## NATIONAL TREE DAY

Organise a planting or join in one near you – there is options for schools, businesses and the community, held in the last week of July.

[Treeday.planetark.org](https://Treeday.planetark.org)

### Stay up to date

[ipswichcitycouncil.eventbrite.com](https://ipswichcitycouncil.eventbrite.com)

Click 'follow' to receive notifications of when new events are added.

# RESTORING WATERWAYS



Join free community planting events and help create habitat for wildlife along our waterways.

Various threatened and significant species will benefit from a \$4 million investment in restoration at nine priority waterway sites across Ipswich.

This project is funded by the Australian Government's Urban Rivers and Catchments Program, with the support of Ipswich City Council.

---

## JACK BARKLEY PARK

Get hands-on with habitat restoration on Bundamba Creek.

The event will be on Saturday 15 March 2025 at Jack Barkley Park, North Booval.



---

## TREES FOR MUM

Celebrate Mother's Day and plant a tree with, or to honour, that special person in your life and improve the environment of Woogaroo Creek.

The event will be on Sunday 11 May 2025 at Kippen Park, Goodna.



---

## WORLD RIVERS DAY HABITAT PLANTING

Join in riverbank stabilisation and restoration on the Bremer River.

The event will be on Sunday 28 September 2025 at a priority site.

**Register online**

[ipswichcitycouncil.  
eventbrite.com](https://www.ipswichcitycouncil.com.au/eventbrite.com)

Cost: Free



**Australian Government**

# EXPERIENCE NATURE



Connect with the natural environment in new ways with an abundance of activities and events from March to May 2025.

There is something for everyone in the program of events, which includes unique and exciting opportunities to discover Ipswich's valuable Enviroplan conservation estates and reserves.

## HIGHLIGHTS

- Discover nature at night with full moon bushwalks
- Book the kids into Easter school holidays nature-based activities
- Increase your fitness while connecting with nature in a guided class
- Enjoy exclusive access to Stirling Road Reserve with special guided walks
- Be inspired by collaborative conservation efforts at a regional forum.

## AGENTS OF DISCOVERY

Download the free app to play augmented reality games in the great outdoors!

Each month discover a new Mission exploring a different Ipswich conservation area. By participating you can go into a prize draw.

Also, visit Queens Park for a special mission that uncovers the iconic plants and animals of Ipswich. Finish the mission to earn a reward!



**See the full program**

[ipswich.qld.gov.au/experiencenature](https://ipswich.qld.gov.au/experiencenature)

Cost:  
Free and low cost

# SUSTAINABLE IPSWICH

During October celebrate community action to increase our city's sustainability.

By sharing stories, knowledge and ideas we can live, eat and play the sustainable way!

A range of activities will encourage grassroots action to make Ipswich a more liveable city.

## SUSTAINABLE OPEN GARDEN TRAIL

Be inspired by local Ipswich homeowners creating sustainable backyards. These properties are part of council's free Habitat Gardens program and full of ideas for you to take home!



## IPSWICH SUSTAINABLE LIVING FESTIVAL

Come along to Tulumur Place in Ipswich Central for an event full of sustainable activities, speakers and entertainment, and food and market stalls.



## WORKSHOPS AND ACTIVITIES

Community partners host a variety of informative and entertaining workshops and events. Find out what sustainability initiatives are happening in Ipswich – and get involved!

### See the full program

[ipswich.qld.gov.au/sustainability](https://ipswich.qld.gov.au/sustainability)

There will be so much happening across October to celebrate Sustainable Ipswich!

Cost: Free and low cost

# CONSERVATION ESTATES

Ipswich has many conservation estates and reserves you can explore. These are funded through council's Ipswich Enviroplan initiative.

---

## WHITE ROCK – SPRING MOUNTAIN CONSERVATION ESTATE

A popular estate for nature-based recreation. Includes the iconic White Rock which has cultural significance to the Traditional Owners.

---

## FLINDERS-GOOLMAN CONSERVATION ESTATE

Home to Ipswich's faunal emblem, the brush-tailed rock-wallaby. Also offers bush camping and Ipswich's most challenging hike.

---

## PURGA NATURE RESERVE

Contains the largest protected area of endangered Swamp Tea-tree forest.

---

## DENMARK HILL CONSERVATION RESERVE

Restored urban bushland with remnants of a mining history.





---

## HAIG STREET QUARRY CONSERVATION RESERVE

A birdwatching hotspot with family friendly bushwalks.

---

## HILLVIEW DRIVE RESERVE

Popular for mountain biking and bushwalking

---

## RIC NATTRASS ENVIRONMENTAL PARK

On Woogaroo Creek, it connects other conservation areas.

---

## IPSWICH PTEROPUS CONSERVATION PARK

Also known as Woodend Nature Centre, it is home to a flying fox colony.

---



### Did you know?

Ipswich has 12 conservation estates and reserves that cover more than 6,700 hectares.

Over more than 25 years about \$12 million has been invested through Ipswich Enviroplan to purchase land for nature conservation.

Ipswich Enviroplan also funds vital works in these conservation areas such as weed and pest control, fire mitigation, research and planning, and visitor infrastructure.

It also supports landholders with preserving and increasing the environmental values of their properties through incentives such as free plants, technical advice or grants.

# ENVIRO VOLUNTEERS

There is something for everyone when it comes to environmental volunteering with council.

When you volunteer with council you support creating a healthier natural environment – whether through hands-on activities or education and awareness.

Opportunities include:

- sharing ideas with visitors at the Queens Park Environmental Education Centre
- planting and maintenance at Bushcare sites across the city
- feeding, cleaning and other animal care work at the Ipswich Nature Centre.



THE ONLY THING MISSING IS **YOU**

**Register your interest now** – [ipswich.qld.gov.au/volunteering](https://ipswich.qld.gov.au/volunteering)

Find volunteering opportunities and register through the Volunteer Portal.

# QUEENS PARK

This popular destination offers a variety of environment-related features and activities.

The historic Queens Park in the centre of Ipswich has plenty of attractions for a full day out, including cafe, gardens, plant nursery, playgrounds and more.



## IPSWICH NATURE CENTRE

With more than 42 species – including dingoes, wallabies, bilbies and more – the Ipswich Nature Centre is a wonderful opportunity to get up close with native wildlife.

**Open Tuesday to Sunday  
9.30 am to 4.00 pm**

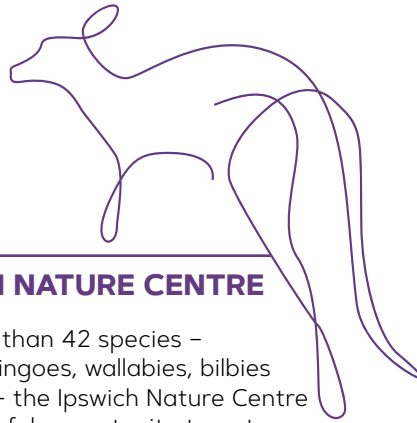
**Free entry** (gold coin donation appreciated).

## QUEENS PARK ENVIRONMENTAL EDUCATION CENTRE

In the heart of Queens Park is an education centre with environmental information and activities for all ages.

**Open Tuesday to Saturday  
9.00 am – 2.00 pm**

**Cost: Free**



# BUSHCARE

Get hands-on with like-minded volunteers on a mission to improve our natural environment.

It is easy to become a Bushcare volunteer:

- no skills or knowledge needed; everything can be learned 'on the job'
- meet new people with similar interests and a shared goal
- do up to three trial days to see if it is for you
- regular volunteers get a free hat, free gloves and can attend workshops
- see the rewards of your hard work as you transform weeds into native habitat.

## Turn up for a trial

[ipswich.qld.gov.au/volunteering](https://ipswich.qld.gov.au/volunteering)

Ipswich's Bushcare groups have regular working bees that you can join for a trial. Find information and register through the Volunteer Portal.



## FIND A GROUP NEAR YOU!

- Woogaroo Creek, Eugene Street Reserve, Bellbird Park
- Bridgewater Park, Springfield
- Opossum Creek Regenerative Project, Brookwater
- Denmark Hill Conservation Reserve, Ipswich
- Friends of Smith Park, Woodend
- Bundamba Creek, Bundamba
- Lorikeet Street Reserve, Bundamba
- Garden of Eden Project, Cribb Park, North Ipswich
- Mason's Gully Regenerative Project, Rosewood
- Peace Park Arboretum, Rosewood
- Banyula Road Reserve, Thagoona.



# FUNDING AND GRANTS

Not-for-profit organisations, schools and wildlife carers can apply for funding to assist their environmental projects.

Under the Enviroplan Levy Community Funding applications can be made for up to \$3,000 for projects that:

- increase community understanding of the values of the natural environment and local environmental issues and impacts
- increase community action that benefits the natural environment
- improve the condition of bushland or the conservation of native flora and fauna on private or public land.

Examples of initiatives include:

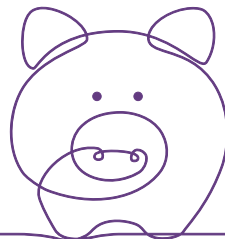
- conservation projects, programs and events
- improvements to native habitat, waterways and parks
- fauna and flora protection and conservation
- tree planting
- community environmental education and awareness.

Wildlife carers can also apply for up to \$1,500 to assist with caring for native species.

## Apply online

[ipswich.qld.gov.au/funding](https://ipswich.qld.gov.au/funding)

Application rounds occur in March and September each year.



# ENVIROED

This program of child-focused activities is designed to educate and empower our next generation of environmental stewards.

EnviroEd includes events, training, resources and excursions specifically to support schools and families with environmental education.

## RESOURCES

Council supports schools with access to key resources for environmental education, including waterbug kits for schools to borrow and suggestions for local creek sites.

Through a partnership with Tangalooma EcoMarines, council is providing more opportunities for Ipswich schools to join the inspirational program.

## TEACHER PROFESSIONAL DEVELOPMENT

This supports educators with practical information on environmental topics and projects they can implement in their school or centre.

Sessions are held approximately once a term at Queens Park Environmental Education Centre or outdoor/onsite locations.

## EXCURSIONS

School groups can organise excursions to Queens Park and can be provided with a recommended program for visiting Ipswich Nature Centre and Queens Park Environmental Education Centre.

The program can include a short presentation by a council officer as well as time to explore the play-based learning experiences.



### Find out more

[ipswich.qld.gov.au/enviroed](http://ipswich.qld.gov.au/enviroed)

Discover information on activities and resources for students, schools, teachers and families.



# KERBSIDE COLLECTION

Being cleaner and greener at home is as simple as sorting your waste before putting it on the kerbside!

## LARGE ITEM KERBSIDE COLLECTION

Ipswich residents have greater access and more flexibility to dispose of unwanted household items with an on-demand service.

- Each household will be eligible for one free collection per year
- Households can order a 2m x 2m bag when it is convenient.

Under the on-demand model, a minimum of 50 per cent of materials are recovered from landfill, with the bagged collection meaning less chance of debris and litter on the kerbside.

See [ipswich.qld.gov.au/kerbside](https://ipswich.qld.gov.au/kerbside)



## CO-MINGLED RECYCLING KERBSIDE COLLECTION

Remember to 'Recycle 5' in your yellow lid recycling bin:

- **glass** jars and bottles
- **metal** such as aluminium and steel (drink and aerosol cans, food tins)
- **plastic** bottles and containers (milk, soft drink and shampoo bottles, yoghurt/icecream tubs)
- **cardboard** boxes (including pizza boxes)
- **paper** (newspapers, magazines, junk mail and office paper).

See [ipswich.qld.gov.au/recycling](https://ipswich.qld.gov.au/recycling)



## GARDEN ORGANICS KERBSIDE COLLECTION

Use your lime green lid GO bin for grass clippings, prunings, leaves, shrubs, weeds and loose bark.

This organic waste is turned into nutrient-rich compost which can be used in green spaces in Ipswich.

In 2025 this green waste service will be rolled out to households across Ipswich.

See [ipswich.qld.gov.au/organics](https://ipswich.qld.gov.au/organics)



# LANDHOLDER PARTNERSHIPS

There are ways council can help private landholders achieve their environmental goals.

A range of free partnerships are available through the Enviroplan-funded Landholder Conservation Partnerships Program (LCPP).

These partnerships encourage and assist Ipswich landholders to manage, enhance and protect ecosystems in order to conserve flora and fauna on their properties.

The program has a range of incentives including free plants, resources, workshops and grant opportunities.



## HABITAT GARDENS

This is an urban partnership designed to help people with smaller blocks make a positive contribution to Ipswich's environmental outcomes.

## BIODIVERSITY CONSERVATION AGREEMENT

This partnership is designed to help protect and manage larger areas of important intact vegetation.

## CORRIDOR CONSERVATION AGREEMENT

Under this partnership, landholders can be supported in restoring fragmented landscapes or waterway corridors.

## LAND FOR WILDLIFE

This established program supports landholders committed to conserving the environment.

## VOLUNTARY CONSERVATION COVENANT

A permanent protection mechanism through the Land Titles Act that protects the ecological values of a property.

**Join a partnership**

[ipswich.qld.gov.au/lcpp](http://ipswich.qld.gov.au/lcpp)

Find more information on requirements and benefits of a partnership that suits your environmental goals.



# FREE PLANT PROGRAM

Ipswich residents are entitled to free plants every financial year.

The plants are grown in council's production nursery and chosen to suit Ipswich's climate and conditions.

Your free plants are available from council's Queens Park Nursery, which is open limited hours, or the Mobile Nursery.

Generally, residents will be able to claim six free plants each financial year!

When you collect your plants you will need to present documentation, such as a current rates notice.

Ipswich residents are also able to purchase plants from the Queens Park Nursery (EFTPOS only).

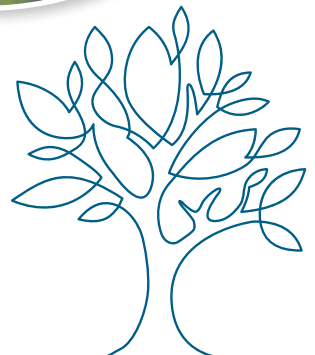


## Pick up your free plants

[ipswich.qld.gov.au/freeplants](https://ipswich.qld.gov.au/freeplants)

Find full details online, including:

- documentation requirements
- nursery opening hours
- mobile nursery dates and locations
- planting and gardening tips.



# GET READY QUEENSLAND

get  
ready  
QUEENSLAND

This year-round program helps all Queenslanders prepare for natural disasters.

**There are simple things your household can do today to Get Ready.**

## HAVE AN EMERGENCY PLAN

Preparing now will save you time and stress in the event of a disaster.

Consider questions such as – do I stay or leave? Where can I find shelter? How will I care for pets? What if I cannot come home?



Use this online tool to help you prepare your household emergency plan

## PREPARE AN EMERGENCY KIT

This kit should have everything your family needs to shelter at home for three days. If you already have an emergency kit, make time each year to check expiry dates and refresh it. Help your friends, family and neighbours get ready too – let's look out for each other.



**Get Ready today**

[ipswich.qld.gov.au/emergency](https://ipswich.qld.gov.au/emergency)

Understand your local risk in Ipswich and find resources from checklists to translated resources.

# DISASTER DASHBOARD

Stay up to date with the latest local information during a disaster or emergency.

It is free and easy – and works on a computer, tablet or smartphone.

Simply go to [Disaster.ipswich.qld.gov.au](http://Disaster.ipswich.qld.gov.au)

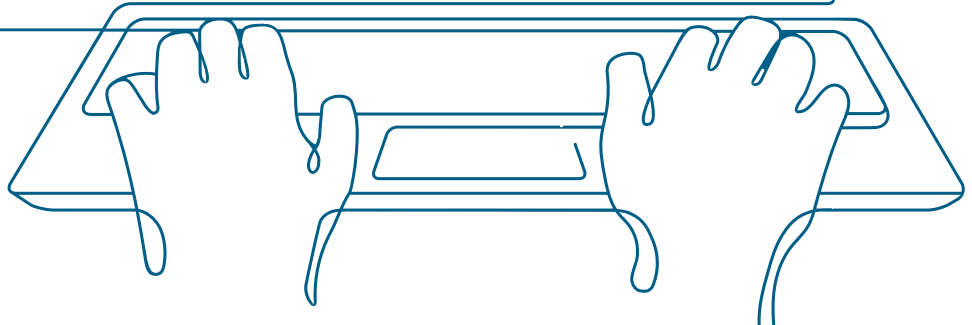
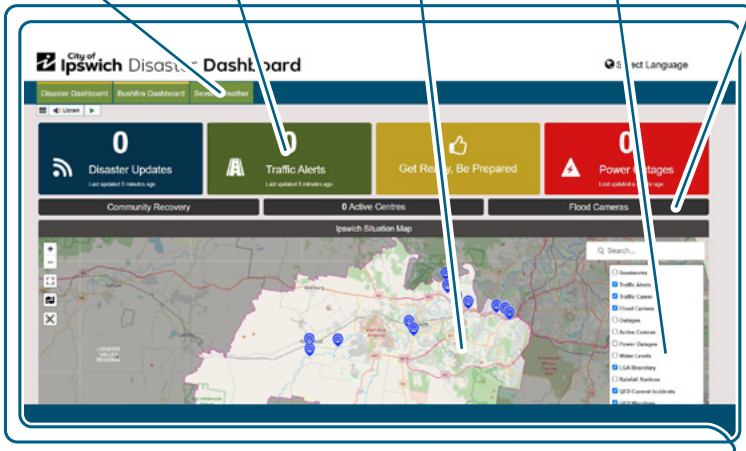
Check warnings for weather and fire conditions.

Find live feeds direct from the source, including BoM, Energex, QLD Traffic and more in one handy location.

See the local information you need on an interactive map.

Choose the real-time information you want.

View flood camera feeds updated every 10 minutes.



 **IPSWICH  
ENVIROPLAN**

Ipswich City Council  
PO Box 191, Ipswich QLD 4305, Australia

Phone (07) 3810 6666  
council@ipswich.qld.gov.au  
ipswich.qld.gov.au

---

Join us online:



/ipswichCityCouncil



/ipswich-city-council



/ipswichCityCouncilTV

*Recycle me  
when you're done!*

Put me in your yellow lid recycling bin.

