

Notification of Works

Springfield Parkway and Springfield Greenbank Arterial Road Upgrade

INF03882

STAGE 3

Nightworks

From 7pm on Wednesday 19 June till 5am on Thursday 20 June 2024 nightworks are required to line mark a section of Springfield Greenbank Arterial, Springfield Central.

WORKS WILL INCLUDE:

- Line marking a section of Springfield Greenbank Arterial from the Main Street roundabout to Eden Station Drive, Springfield Central.
- Road pavement testing
- Asphaltting on Springfield Greenbank Arterial from Sinnathamby to Main Street
- Removal of some traffic barriers, bollards and fencing.

WHAT TO EXPECT?

- Changed traffic conditions, including temporary partial road closures of Springfield Greenbank Arterial between Main Street and Eden Station Drive, Springfield Central.
- Road line marking of Springfield Greenbank Arterial.
- Asphaltting of Springfield Greenbank Arterial from Sinnathamby Boulevard to Main Street behind current traffic barriers.
- Traffic control signage, vehicles and controllers to direct traffic.
- Reduced speed limit to 40km/h through the work area
- Entry to the Springfield Central Park'n'Ride is available with the exit being left turn only for the duration.
- There will be some impact to bus services between Eden Station Drive to Main

Street. Please refer to the Translink website for details.

- Limited pedestrian access around the construction area. Temporary footpath closures near the work area will occur and alternative routes will be signed.
- Some minor noise and dust associated with these activities. Every effort will be made to minimise these impacts.

WHEN WILL THESE WORKS TAKE PLACE?

Start	19 – 20 June 2024
Duration	One night
Time and day	7pm – 5am Wednesday, Thursday

THANK YOU

The project team apologises for any inconvenience during these works and thank you for your patience as we construct this vital infrastructure for the region.

CONTACT US

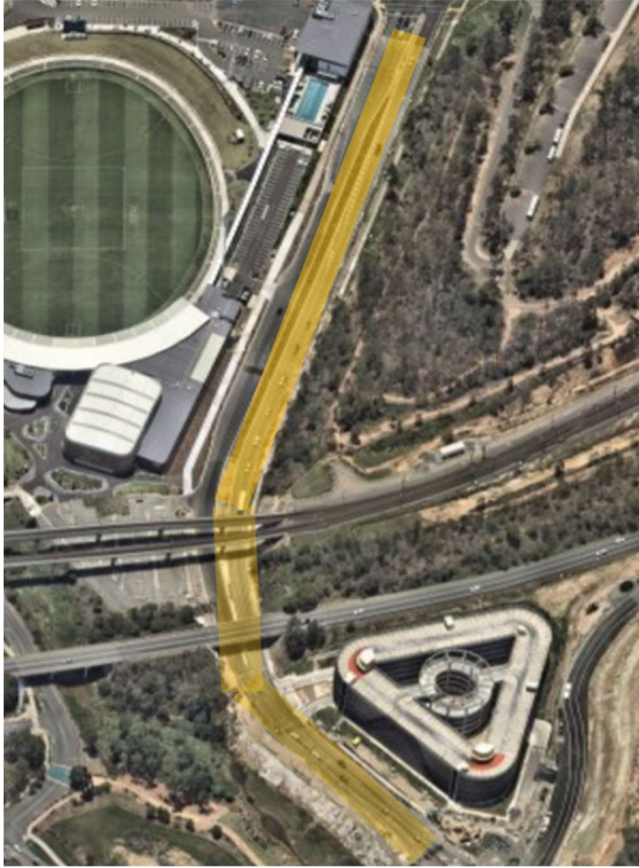
To find out more about the project, you can contact us or by visiting the dedicated project webpage via QR link below:

PHONE – 07 3810 6666 (8am-4:30pm)

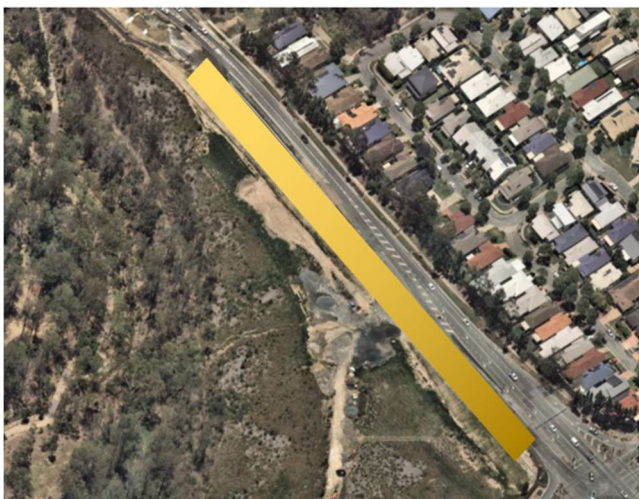
@capitalprojects@ipswich.qld.gov.au



Work Locations



Line marking work area Springfield Greenbank Arterial between Eden Station Drive and Main Street, Springfield Central



Asphalting and pavement investigation work area Springfield Greenbank Arterial between Sinnathamby and Main Street, Springfield Central