

Notification of Works

Springfield Parkway and Springfield Greenbank Arterial Road Upgrade

INF03882 - Division 2

12 March 2025



STAGE 3 NIGHTWORKS

From 7pm Sunday 23 March through till 5am Tuesday 25 March 2025, final asphaltting and line marking will occur on the Centenary Motorway Exit 32 off ramp, Springfield Central.

Construction work will be carried out from Sunday to Tuesday, 7pm till 5am, weather permitting and include:

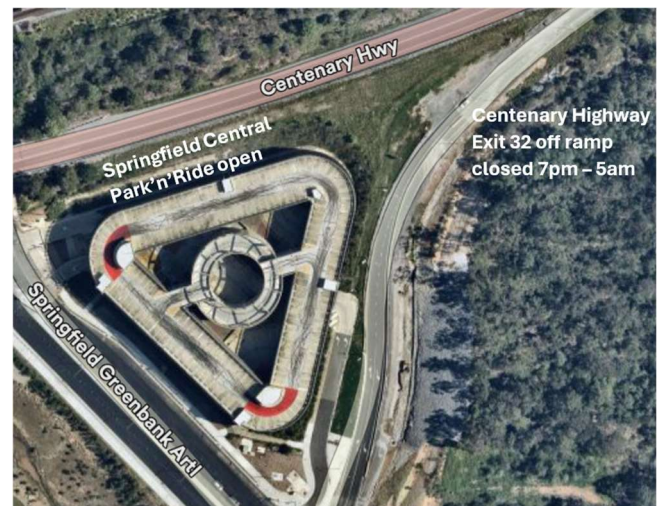
- Asphaltting of the final road layer of the four lanes of the Exit 32 off ramp
- Line marking of Exit 32 off ramp road lanes connecting to the Main Street intersection.

WHAT TO EXPECT?

- Changed traffic conditions including temporary full closures of Centenary Motorway Exit 32 off ramp, Main Street and Springfield Greenbank Arterial. Motorists will be detoured into Springfield Central via Centenary Motorway Exit 31.
- For motorists, Springfield Central Park'n'Ride access will be open for the duration. Access will be via Springfield Greenbank Arterial.
- Bus services using Exit 32 will be diverted for the duration.
- Traffic control signage, vehicles and controllers to direct traffic.
- Reduced speed limit to 40km/h through work areas.
- Temporary footpath closures near the work areas will occur and alternative pedestrian routes will be signed.
- Some minor noise and dust associated with these activities. Every effort will be made to minimise these impacts.

WHEN WILL THESE WORKS TAKE PLACE?

Start	23 – 25 March 2025
Duration	Two Nights
Time and day	7pm – 5am Sunday to Tuesday



Asphaltting and line marking works Centenary Highway Exit 32 off ramp

THANK YOU

The project team apologises for any inconvenience during these works and thank you for your patience as we construct this vital infrastructure for the region.

CONTACT US

To find out more about the project, you can contact us or by visiting the dedicated project webpage via QR link below:

PHONE – 07 3810 6666 (8am-4:30pm)

@capitalprojects@ipswich.qld.gov.au

