

# EnviroEd

2025  
PROGRAM

FOR STUDENTS | FOR TEACHERS | FOR SCHOOLS | FOR FAMILIES



City of  
Ipswich

# WHAT IS ENVIROED?

Ipswich has a unique landscape with one of the most diverse ranges of natural vegetation types in South-East Queensland. There are more than 2,000 recorded species of native plants and animals in Ipswich. Many are rare or threatened.

Ipswich City Council aims to promote, protect and enhance the local environment inclusive of the cultural landscape features, as well as create community awareness, engagement and opportunities for connection with nature. To achieve success, council seeks to work closely with the community to build awareness and engagement.

Our program of activities for schools is designed to educate and empower our next generation of environmental stewards. It includes events, training, resources and excursions specifically designed to support schools in the delivery of hands-on environmental education.



## Get in touch

Council's Environment Education officer can provide advice and guidance on school environmental education.

Resources are also available to support schools.

If you have a question or a suggestion:

**Email:** [enviroed@ipswich.qld.gov.au](mailto:enviroed@ipswich.qld.gov.au)

**Phone:** (07) 3810 6666

**Web:** [ipswich.qld.gov.au/enviroed](http://ipswich.qld.gov.au/enviroed)



# FOR TEACHERS

## CURRICULUM LINKS

Here are some of the ways you can connect your curriculum with council's programs.

### Queens Park

Queens Park excursions are a great place to explore real-life examples from the P-6 Biological Sciences curriculum. Topics include habitats, lifecycles, living things and adaptation to environments.

Queens Park also has a rich history. Students can explore interesting questions on how it has changed, as part of their focus on past and present objects, people, places and events.

### Waterway health

When you are exploring Earth and space sciences in Year 4, borrow our waterbug kit and take samples of local waterways.

We also recommend contacting Urban Utilities or Seqwater for their range of incursions and excursions.

### Waste management

Talk to our waste education team about links to the Year 4 chemical sciences curriculum.

We also recommend contacting the Remondis REdiscovery Hub in Swanbank for excursions to see how different materials are managed at a resource recovery and landfill facility.

### Leadership

As senior primary students explore topics of civics and citizenship, the Youth Sustainability Summit provides inspirational and practical ways they can participate as citizens in the school and community.



For more ideas, both programs offered by council and complementary external programs, see the 'Resources and Activities Downloads' page at [ipswich.qld.gov.au/enviroed](https://ipswich.qld.gov.au/enviroed)

# FOR TEACHERS

## WATERBUG KITS

Your local creek or waterway can become an instant classroom.

Waterbug kits can be borrowed from council's EnviroEd officer.

The kit includes nets, trays and a large reference poster so your students can discover the tiny life living in Ipswich waterways, and how that indicates waterway health.

Council's EnviroEd officer may also be able to suggest some local waterway locations suitable for your activity.

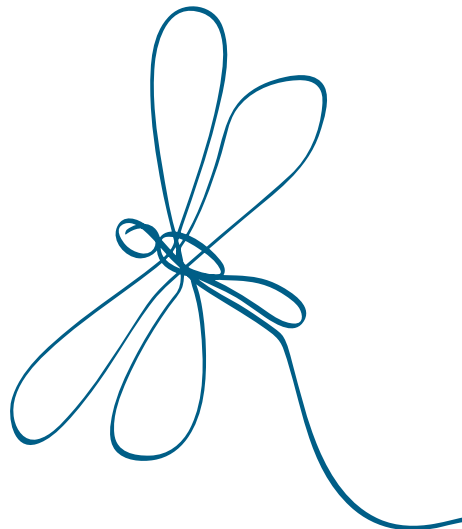
What a teacher said about the waterbug kits:

*'It's been amazing to watch the anticipation on our students' faces as they search through their samples to find waterbugs. They love comparing to see who has the more weird and wonderful creatures!'*

### How to borrow a waterbug kit:

Email the EnviroEd officer at [enviroed@ipswich.qld.gov.au](mailto:enviroed@ipswich.qld.gov.au) to register your interest in borrowing a waterbug kit for your class.

Cost: Free



# FOR TEACHERS

## PROFESSIONAL DEVELOPMENT

Connect with like-minded peers from Ipswich schools and upskill on environment topics for your classroom!

Sessions will occur roughly once a term.

They will be held at the Queens Park Environmental Education Centre, or at outside/onsite locations if the topic warrants.

Potential topics for the 2025 program may include:

- incorporating Bush Kindy principles
- habitats at school including worms, native bees, frog hotels and planting
- waterway health and water-saving
- waste minimisation.



### How to book:

To be notified about these events  
'Follow' [ipswichcitycouncil.eventbrite.com](https://www.ipswichcitycouncil.com.au/eventbrite)





# FOR STUDENTS

## SUSTAINABILITY SQUADS

Across Ipswich, students are taking the lead in creating positive changes.

Often formed as 'sustainability squads' these students have ownership of initiatives within their schools to reduce waste, improve the environment and create healthier lifestyles.

Council can help connect schools with organisations that support sustainability squads achieve their goals, such as OzHarvest, Containers for Change, Urban Utilities and more.

## WASTE EDUCATION

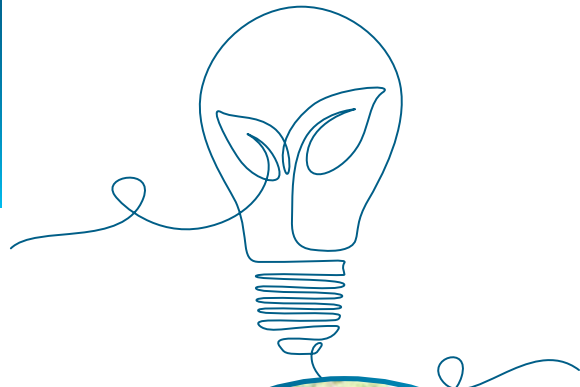
Ipswich City Council can offer support for waste education.

This will help students and sustainability squads take measures to understand waste streams and take practical measures to reduce waste to landfill.

## YOUTH SUSTAINABILITY SUMMIT

This event for Years 4–6 will take a short break in 2025. The summit is a great way to recognise and inspire your sustainability squad students!

The event will return in May 2026 with an engaging program full of ideas for projects students can enact at school, home and in the community.



Email the EnviroEd officer at [enviroed@ipswich.qld.gov.au](mailto:enviroed@ipswich.qld.gov.au) to talk about how council and other great organisations can support your sustainability squads goals.

# FOR STUDENTS

## TANGALOOMA ECOMARINES

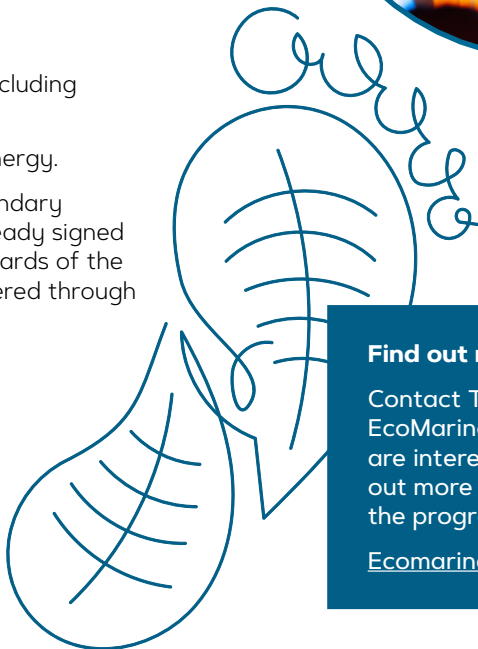
Council is proud to be a sponsor in 2025 of this fun environmental education program for schools and education centres.

With council's support, Tangalooma EcoMarines are providing more opportunities for Ipswich schools to join the program.

The EcoMarines program inspires young learners and their school communities to be environmental leaders through education and positive action, with a focus on:

- reducing litter
- managing waste including our key resources
- food, water and energy.

Both primary and secondary Ipswich schools are already signed up and reaping the rewards of the on-ground support offered through the program.



### Find out more:

Contact Tangalooma EcoMarines directly if you are interested in finding out more about joining the program.

[Ecomarines.org](https://ecomarines.org)

# FOR STUDENTS

## QUEENS PARK

This popular destination offers a variety of environment-related features and activities.

Schools and other large groups are requested to book their visit a month in advance.

A recommended program for exploring the park will be provided, depending on your group size. Please note that groups over 90 students are recommended to split their visit over two days.



## IPSWICH NATURE CENTRE

With more than 42 species – including dingoes, wallabies, bilbies and more – Ipswich Nature Centre is a wonderful opportunity to get up close with native wildlife through a guided experience.

Open: 9.30 am – 4.00 pm, Tuesday to Sunday

Cost: Free (gold coin donation appreciated)



## QUEENS PARK ENVIRONMENTAL EDUCATION CENTRE

At Queens Park Environmental Education Centre school groups will experience a short presentation by a council officer, followed by time to explore the play-based learning experiences at the centre.

If classes are interested in specific focus areas, tailored programs can be arranged.

Open: School group visits are available 9.00 am – 2.00 pm, Tuesday to Thursday

Cost: Free

### Booking an excursion at Queens Park

Find the EnviroEd booking enquiry form at [ipswich.qld.gov.au/enviroed](https://ipswich.qld.gov.au/enviroed)

For more information email [enviroed@ipswich.qld.gov.au](mailto:enviroed@ipswich.qld.gov.au)



# FOR SCHOOLS

## FUNDING OPPORTUNITIES

Schools and education centres can apply for funding to assist their environmental projects.

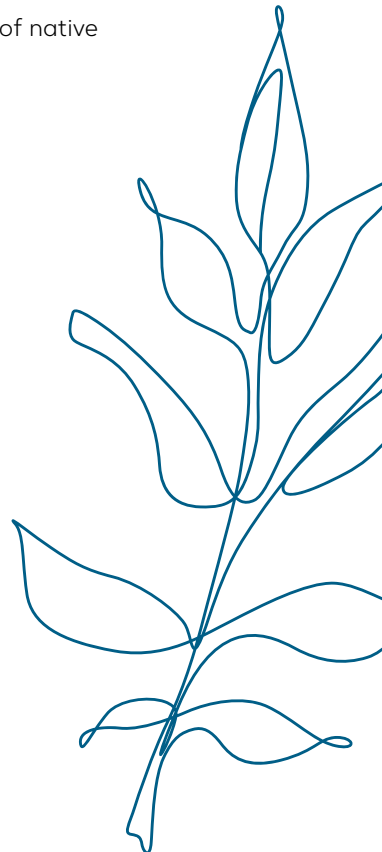
Under the Enviroplan Levy Community Funding schools/childcares may apply for up to \$3,000 each application for projects that:

- increase community understanding of the value of the natural environment and local environmental issues and impacts
- increase community action that benefits the natural environment
- improve the condition of bushland or the conservation of native flora and fauna on private or public land.

Examples of initiatives include:

- conservation projects, programs and events
- improvements to native habitat, waterways and parks
- fauna and flora protection and conservation
- tree planting
- community environmental education and awareness.

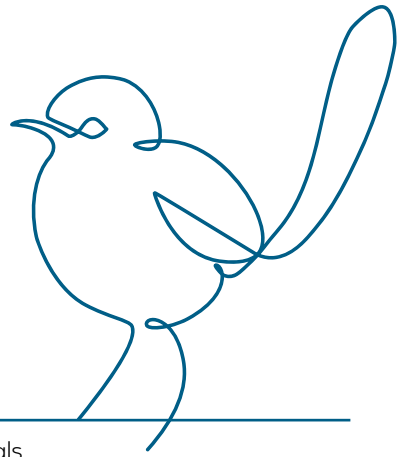
For more information see [ipswich.qld.gov.au/funding](https://ipswich.qld.gov.au/funding)



If you would like some assistance in completing a grant application, council offers grant writing workshops throughout the year.

Email [enviroed@ipswich.qld.gov.au](mailto:enviroed@ipswich.qld.gov.au) for more information.

# FOR SCHOOLS



## CREATING HABITAT

Schools can lead by example and create habitat for wildlife on their grounds.

There are ways council can help with environmental goals.

### Free plants

Ipswich schools and education centres are eligible for 100 free plants each year through the Free Plant Program.

An application form is available at [ipswich.qld.gov.au/freeplants](https://ipswich.qld.gov.au/freeplants)

If you are interested in bush tucker plants contact [enviroed@ipswich.qld.gov.au](mailto:enviroed@ipswich.qld.gov.au) for a recommended plant list.

### Landholder conservation partnerships

Schools with a big interest in environment conservation may be interested in joining the Landholder Conservation Partnerships Program.

The Enviroplan-funded program assists with managing, enhancing and protecting ecosystems.

The free program offers a range of support and assistance to members.

For information on program options and eligibility criteria, search 'Landholder Conservation Partnerships' at [ipswich.qld.gov.au](https://ipswich.qld.gov.au)



# FOR FAMILIES

## ENVIRONMENT EVENTS

Stay up to date with events and activities for all ages.

Council initiatives support a healthy and vibrant natural environment that is highly valued by, and connected to, the community.

You will find a range of events and educational activities for all ages that highlight our conservation and sustainability efforts across the city.

This includes community education, citizen science, volunteering and habitat planting days.

### School holidays

The school holiday program is filled with a range of fun activities that encourage kids to get involved in our local environment and learn about ways to become more sustainable.

Council's program in 2025 will have activities both at Queens Park Environmental Education Centre and in outdoor locations.



### Find out more:

Events are added throughout the year.  
Go to [lpswichcitycouncil.eventbrite.com](https://lpswichcitycouncil.eventbrite.com)

Click 'Follow' to receive notifications when events are added.

 **IPSWICH  
ENVIROPLAN**

Ipswich City Council  
PO Box 191, Ipswich QLD 4305, Australia

Phone (07) 3810 6666  
council@ipswich.qld.gov.au  
ipswich.qld.gov.au/enviroed

---

Join us online:

 /IpswichCityCouncil

 /ipswich-city-council

 /IpswichCityCouncilTV

*Recycle me  
when you're done!*

Put me in your yellow lid recycling bin.

